



Features

- 1210 size
- Magnetic shielding
- High Q characteristic
- High current rating
- RoHS compliant*

Applications

- Prevention of electromagnetic interference to signals on the secondary side of electronic equipment

CMH322522 Series - Shielded Wirewound Chip Inductor

Electrical Specifications

| Bourns Part No. | Inductance | | Q | Test Freq. MHz | SRF MHz | DCR | I rms |
|-----------------|------------|-------|----|----------------|---------|------|-------|
| | μH | Tol.% | | | | | |
| CMH322522-10NML | 0.010 | ±20 | 15 | 100 | 2500 | 0.13 | 450 |
| CMH322522-12NML | 0.012 | ±20 | 17 | 100 | 2300 | 0.14 | 450 |
| CMH322522-15NML | 0.015 | ±20 | 19 | 100 | 2100 | 0.16 | 450 |
| CMH322522-18NML | 0.018 | ±20 | 21 | 100 | 1900 | 0.18 | 450 |
| CMH322522-22NML | 0.022 | ±20 | 23 | 100 | 1700 | 0.20 | 450 |
| CMH322522-27NML | 0.027 | ±20 | 23 | 100 | 1500 | 0.22 | 450 |
| CMH322522-33NML | 0.033 | ±20 | 25 | 100 | 1400 | 0.24 | 450 |
| CMH322522-39NML | 0.039 | ±20 | 25 | 100 | 1300 | 0.27 | 450 |
| CMH322522-47NML | 0.047 | ±20 | 26 | 100 | 1200 | 0.30 | 450 |
| CMH322522-56NML | 0.056 | ±20 | 26 | 100 | 1100 | 0.33 | 450 |
| CMH322522-68NML | 0.068 | ±20 | 27 | 100 | 1000 | 0.36 | 450 |
| CMH322522-82NML | 0.082 | ±20 | 30 | 100 | 900 | 0.40 | 450 |
| CMH322522-R10ML | 0.10 | ±20 | 30 | 100 | 700 | 0.44 | 450 |
| CMH322522-R12ML | 0.12 | ±20 | 30 | 25.2 | 500 | 0.22 | 450 |
| CMH322522-R15ML | 0.15 | ±20 | 30 | 25.2 | 450 | 0.25 | 450 |
| CMH322522-R18ML | 0.18 | ±20 | 30 | 25.2 | 400 | 0.28 | 450 |
| CMH322522-R22ML | 0.22 | ±20 | 30 | 25.2 | 350 | 0.32 | 450 |
| CMH322522-R27ML | 0.27 | ±20 | 30 | 25.2 | 320 | 0.36 | 450 |
| CMH322522-R33ML | 0.33 | ±20 | 30 | 25.2 | 300 | 0.40 | 450 |
| CMH322522-R39ML | 0.39 | ±20 | 30 | 25.2 | 250 | 0.45 | 450 |
| CMH322522-R47ML | 0.47 | ±20 | 30 | 25.2 | 220 | 0.50 | 450 |
| CMH322522-R56ML | 0.56 | ±20 | 30 | 25.2 | 180 | 0.55 | 450 |
| CMH322522-R68ML | 0.68 | ±20 | 30 | 25.2 | 160 | 0.60 | 450 |
| CMH322522-R82ML | 0.82 | ±20 | 30 | 25.2 | 140 | 0.65 | 450 |
| CMH322522-1R0KL | 1.0 | ±10 | 30 | 7.96 | 120 | 0.70 | 400 |
| CMH322522-1R2KL | 1.2 | ±10 | 30 | 7.96 | 100 | 0.75 | 390 |
| CMH322522-1R5KL | 1.5 | ±10 | 30 | 7.96 | 85 | 0.85 | 370 |
| CMH322522-1R8KL | 1.8 | ±10 | 30 | 7.96 | 80 | 0.90 | 350 |
| CMH322522-2R2KL | 2.2 | ±10 | 30 | 7.96 | 75 | 1.0 | 320 |
| CMH322522-2R7KL | 2.7 | ±10 | 30 | 7.96 | 70 | 1.1 | 290 |
| CMH322522-3R3KL | 3.3 | ±10 | 30 | 7.96 | 55 | 1.2 | 260 |
| CMH322522-3R9KL | 3.9 | ±10 | 30 | 7.96 | 50 | 1.3 | 250 |
| CMH322522-4R7KL | 4.7 | ±10 | 30 | 7.96 | 45 | 1.5 | 220 |
| CMH322522-5R6KL | 5.6 | ±10 | 30 | 7.96 | 40 | 1.6 | 200 |
| CMH322522-6R8KL | 6.8 | ±10 | 30 | 7.96 | 35 | 1.8 | 180 |
| CMH322522-8R2KL | 8.2 | ±10 | 30 | 7.96 | 30 | 2.0 | 170 |
| CMH322522-100KL | 10 | ±10 | 30 | 2.52 | 28 | 2.1 | 150 |
| CMH322522-120KL | 12 | ±10 | 30 | 2.52 | 20 | 2.5 | 140 |
| CMH322522-150KL | 15 | ±10 | 30 | 2.52 | 20 | 2.8 | 130 |
| CMH322522-180KL | 18 | ±10 | 30 | 2.52 | 20 | 3.3 | 120 |
| CMH322522-220KL | 22 | ±10 | 30 | 2.52 | 19 | 3.7 | 110 |
| CMH322522-270KL | 27 | ±10 | 30 | 2.52 | 18 | 5.0 | 80 |
| CMH322522-330KL | 33 | ±10 | 30 | 2.52 | 16 | 5.6 | 70 |
| CMH322522-390KL | 39 | ±10 | 30 | 2.52 | 15 | 6.4 | 65 |
| CMH322522-470KL | 47 | ±10 | 30 | 2.52 | 13 | 7.0 | 60 |
| CMH322522-560KL | 56 | ±10 | 30 | 2.52 | 12 | 8.0 | 55 |
| CMH322522-680KL | 68 | ±10 | 30 | 2.52 | 11 | 9.0 | 50 |
| CMH322522-820KL | 82 | ±10 | 30 | 2.52 | 10 | 10 | 45 |
| CMH322522-101KL | 100 | ±10 | 20 | 0.796 | 9 | 10 | 40 |
| CMH322522-121KL | 120 | ±10 | 20 | 0.796 | 9 | 11 | 70 |
| CMH322522-151KL | 150 | ±10 | 20 | 0.796 | 7 | 15 | 65 |
| CMH322522-181KL | 180 | ±10 | 20 | 0.796 | 6 | 17 | 60 |
| CMH322522-221KL | 220 | ±10 | 20 | 0.796 | 6 | 21 | 50 |
| CMH322522-271KL | 270 | ±10 | 20 | 0.796 | 5 | 28 | 45 |
| CMH322522-331KL | 330 | ±10 | 20 | 0.796 | 4 | 34 | 40 |

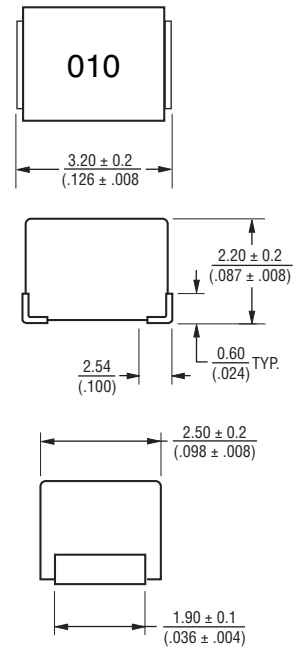
General Specifications

Temperature Rise20 °C max. at rated current
 Operating Temperature-55 °C to +125 °C
 Storage Temperature...-55 °C to +125 °C
 Reflow Soldering ...230 °C, 50 sec. max.
 Resistance to Soldering Heat260 °C, 5 seconds

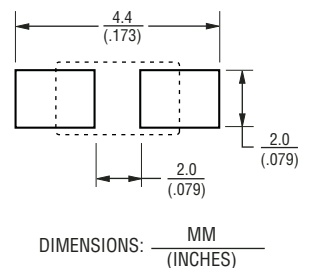
Materials

Core Material.....Ferrite
 Terminal Electrode.....Cu/Sn
 Packaging.....2,000 pcs per reel

Product Dimensions



Recommended Layout

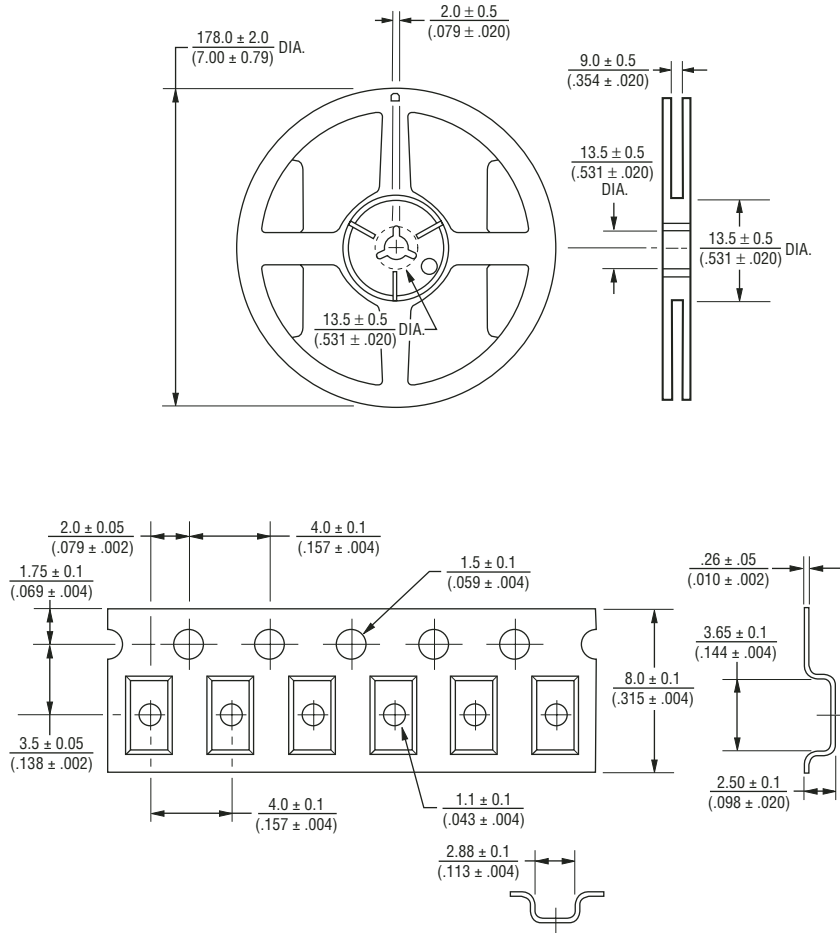


*RoHS Directive 2002/95/EC Jan 27 2003 including Annex
 Specifications are subject to change without notice. • Customers should verify actual device performance in their specific applications.

CMH322522 Series - Shielded Wirewound Chip Inductor

BOURNS®

Packaging Specifications



Asia-Pacific:

Tel: +886-2 2562-4117 • Fax: +886-2 2562-4116

Europe:

Tel: +41-41 768 5555 • Fax: +41-41 768 5510

The Americas:

Tel: +1-951 781-5500 • Fax: +1-951 781-5700

www.bourns.com

REV. 02/08

Specifications are subject to change without notice.
Customers should verify actual device performance in their specific applications.